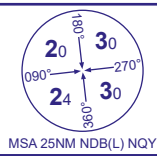


INSTRUMENT APPROACH CHART - ICAO

NEWQUAY
ILS/DME/NDB(L)
RWY 12
(ACFT CAT A,B,C,D)



MSA 25NM NDB(L) NQY

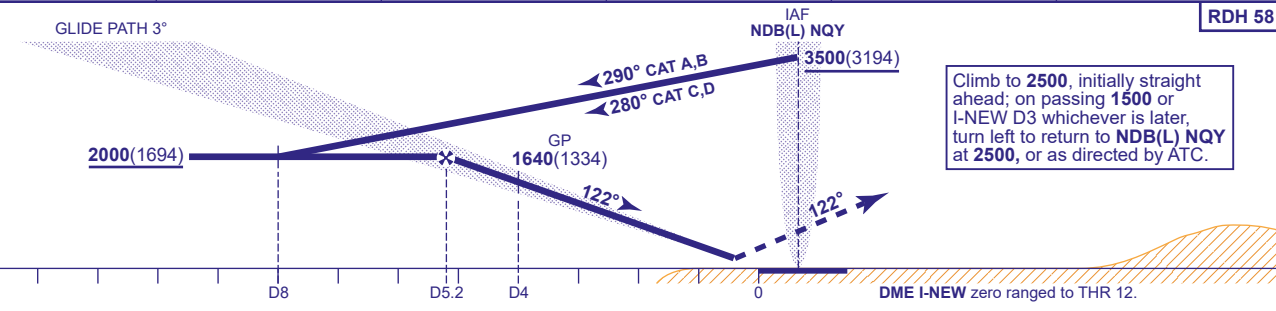
APP	133.405	NEWQUAY APPROACH	AD ELEVATION	390
TWR	134.380	NEWQUAY TOWER	THR ELEVATION	306
RAD	127.930	NEWQUAY RADAR	OBSTACLE ELEVATION	1286 AMSL (980) (ABOVE THR)
ATIS	127.405	NEWQUAY INFORMATION	BEARINGS ARE MAGNETIC	

TRANSITION ALTITUDE	3000
---------------------	------



RECOMMENDED PROFILE GLIDE PATH 3°, 318FT/NM

DME I-NEW	5	4	3	2	1
ALT(HGT)	1960(1654)	1640(1334)	1320(1014)	1000(694)	680(374)



Aircraft Category	A	B	C	D	Rate of descent	G/S KT	160	140	120	100	80
OCA (OCH)	CAT I	460(154)	470(164)	481(175)	493(187)	FT/MIN	850	740	640	530	420
VM(C)OCA (OCH AAL)	Total Area	790(400)	1200(810)	1330(940)	1330(940)						

AIRCRAFT UNABLE TO RECEIVE DME
Advise ATC and continue as for normal procedure, Radar Ranges will be provided at 8NM outbound and at 4NM inbound.

NOTE ATC will normally require aircraft to hold no lower than 3500.

CHANGE (6/24): OCA(OCH) CAT A TO D INCREASE.